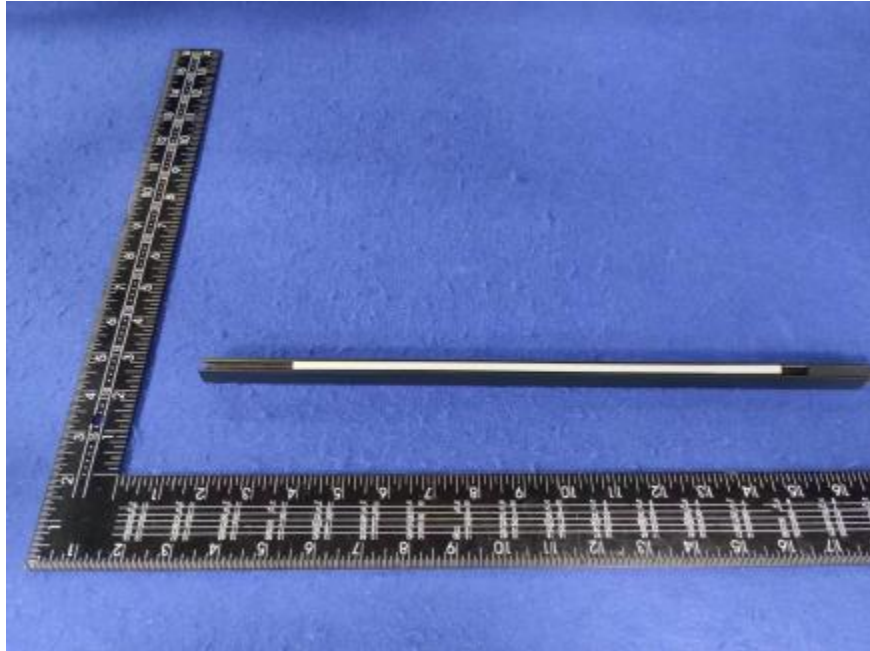


Luminaire Photograph



Light Output Ratio:	36.0%	
Luminaire Power:	4.228 W	
SHR Nominal:	1.25	Calculated using the TM5
SHR Maximum:	1.35	fine grid method.

C Range: 0 - 360DEG
C Interval: 30.0DEG
Test Speed: HIGH
Temperature: 25.3 °C
Operators: zoe
Test Date: 2024-3-27

Range: 0 - 180DEG
Interval: 1.0DEG
Test System: EVERFINE GO-SPEX500_V1 SYSTEM V2.00.461
Humidity: 65.0%
Test Distance: 3.160m [K=1.0000]
Remarks: LAMP: HL-A-3014H421W-S1-08HL-HR5 Ra:90
PC: PT-0064
NOT DRIVER: 24V
30minutes warm-up

LUMINOUS INTENSITY DISTRIBUTION DIAGRAM

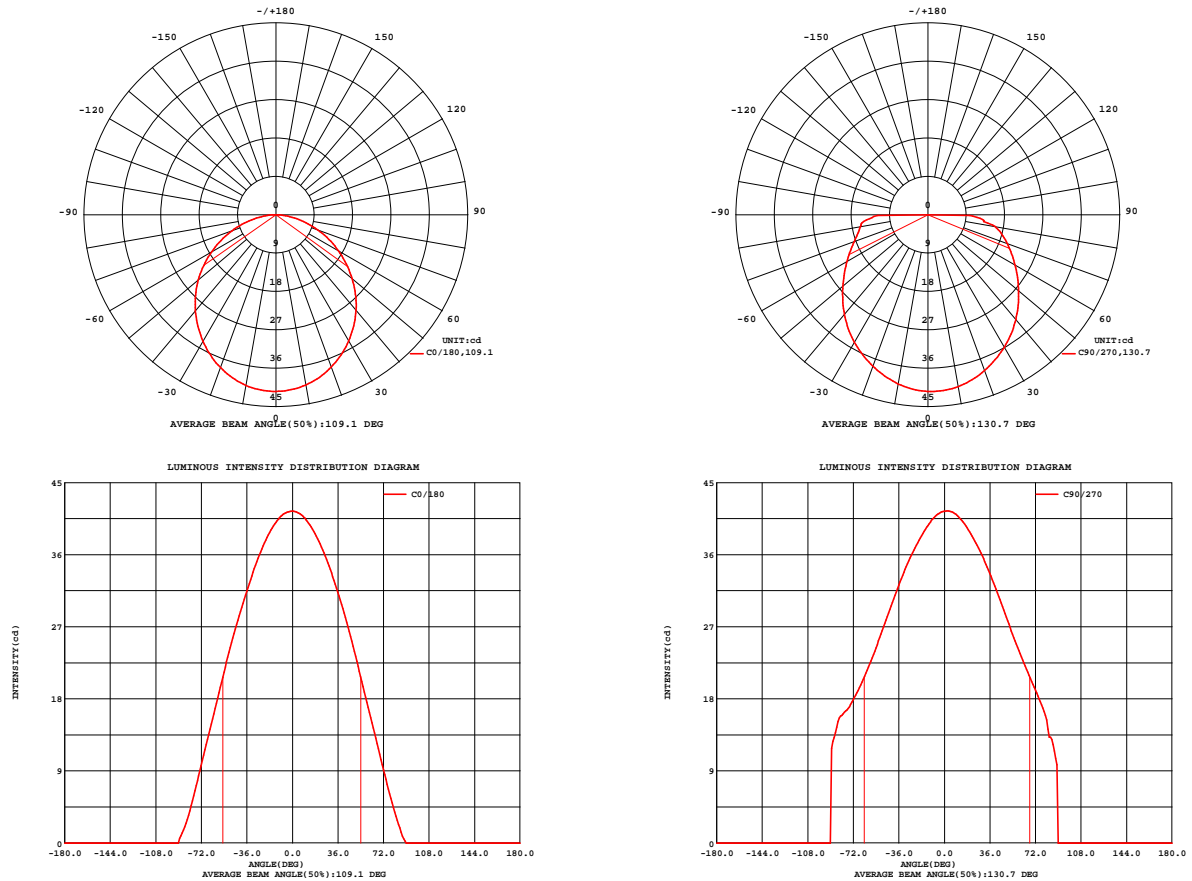


Fig. C0/C180

Fig. C90/C270

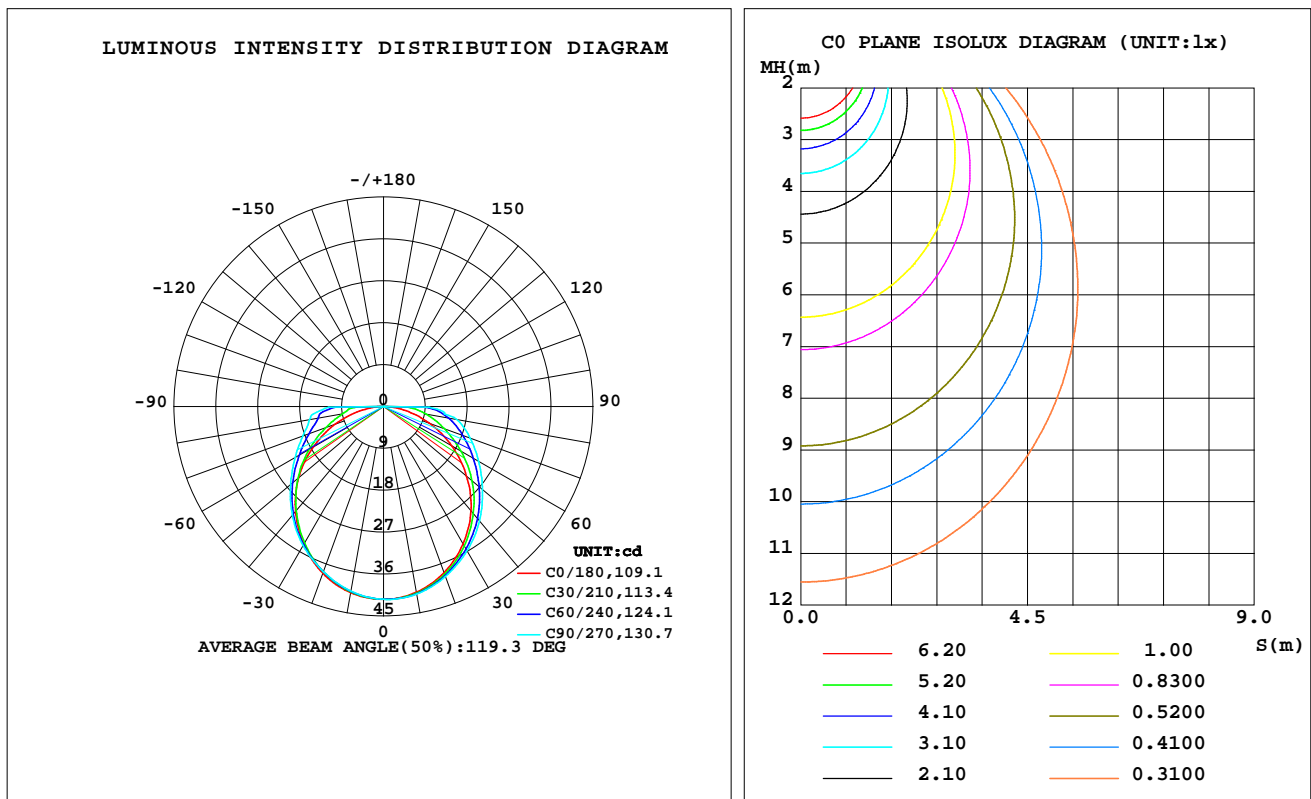
C Range: 0 - 360DEG
C Interval: 30.0DEG
Test Speed: HIGH
Temperature: 25.3 °C
Operators: zoe
Test Date: 2024-3-27

Range: 0 - 180DEG
Interval: 1.0DEG
Test System: EVERFINE GO-SPEX500_V1 SYSTEM V2.00.461
Humidity: 65.0%
Test Distance: 3.160m [K=1.0000]
Remarks: LAMP: HL-A-3014H421W-S1-08HL-HR5 Ra: 90
PC: PT-0064
NOT DRIVER: 24V
30minutes warm-up

LUMINAIRE PHOTOMETRIC TEST REPORT

Test:U:23.998V I:0.1762A P:4.2284W PF:1.0000 Freq:49.99Hz Lamp Flux:373.139x1 lm		
NAME: 2417.200A	TYPE:	WEIGHT:
SPEC.: 3000K	DIM.:	SERIAL No.: 2403270233
MFR.: RISE	SUR.: 0.01746m2	Shielding Angle:

DATA OF LAMP		PHOTOMETRIC DATA Eff: 31.81 lm/W			
MODEL	HONGLI	I _{max} (cd)	41.46	S/MH(C0/180)	1.24
NOMINAL POWER(W)	4	LOR(%)	36.0	S/MH(C90/270)	1.24
RATED VOLTAGE(V)	24	TOTAL FLUX(lm)	134.49	UP,DN(C0-180)	0.0,18.2
NOMINAL FLUX(lm)	373.139	CIE CLASS	DIRECT	UP,DN(C180-360)	0.0,17.8
LAMPS INSIDE	1	up(%)	0.0	CIBSE SHR NOM	1.25
TEST VOLTAGE(V)	24	down(%)	36.0	CIBSE SHR MAX	1.35



C Range: 0 - 360DEG
C Interval: 30.0DEG
Test Speed: HIGH
Temperature:25.3℃
Operators:zoe
Test Date:2024-3-27

Range: 0 - 180DEG
Interval: 1.0DEG
Test System:EVERFINE GO-SPEX500_V1 SYSTEM V2.00.461
Humidity:65.0%
Test Distance:3.160m [K=1.0000]
Remarks: LAMP:HL-A-3014H421W-S1-08HL-HR5 Ra:90
PC:PT-0064
NOT DRIVER:24V
30minutes warm-up

ZONAL FLUX DIAGRAM

ZONAL FLUX DIAGRAM:

	C0	C45	C90	C135	C180	C225	C270	C315		zone	total	%lum,lamp
10	40.53	40.78	40.92	40.84	40.61	40.39	40.29	40.33	0- 10	3.914	3.914	2.91,1.05
20	37.99	38.51	38.86	38.60	38.13	37.81	37.77	37.71	10- 20	11.16	15.07	11.2,4.04
30	34.14	35.02	35.85	35.11	34.26	34.12	34.51	34.01	20- 30	16.82	31.90	23.7,8.55
40	29.26	30.71	32.09	30.76	29.41	29.68	30.47	29.52	30- 40	20.34	52.24	38.8,14
50	23.31	25.83	27.77	25.89	23.81	24.75	26.08	24.54	40- 50	21.45	73.68	54.8,19.7
60	16.92	20.77	23.63	20.82	17.44	19.69	21.96	19.41	50- 60	20.30	93.98	69.9,25.2
70	10.42	15.99	19.81	15.92	10.98	15.07	18.44	14.76	60- 70	17.49	111.5	82.9,29.9
80	4.423	11.68	15.92	11.34	4.646	11.60	16.13	11.22	70- 80	13.86	125.3	93.2,33.6
90	0	0	0	0	0	0	0	0	80- 90	9.164	134.5	100,36
100	0	0	0	0	0	0	0	0	90-100	0	134.5	100,36
110	0	0	0	0	0	0	0	0	100-110	0	134.5	100,36
120	0	0	0	0	0	0	0	0	110-120	0	134.5	100,36
130	0	0	0	0	0	0	0	0	120-130	0	134.5	100,36
140	0	0	0	0	0	0	0	0	130-140	0	134.5	100,36
150	0	0	0	0	0	0	0	0	140-150	0	134.5	100,36
160	0	0	0	0	0	0	0	0	150-160	0	134.5	100,36
170	0	0	0	0	0	0	0	0	160-170	0	134.5	100,36
180	0	0	0	0	0	0	0	0	170-180	0	134.5	100,36
DEG	LUMINOUS INTENSITY:cd									UNIT:lm		

C Range: 0 - 360DEG
C Interval: 30.0DEG
Test Speed: HIGH
Temperature:25.3℃
Operators:zoe
Test Date:2024-3-27

Range: 0 - 180DEG
Interval: 1.0DEG
Test System:EVERFINE GO-SPEX500_V1 SYSTEM V2.00.461
Humidity:65.0%
Test Distance:3.160m [K=1.0000]
Remarks: LAMP:HL-A-3014H421W-S1-08HL-HR5 Ra:90
PC:PT-0064
NOT DRIVER:24V
30minutes warm-up

LUMINANCE LIMITATION CURVES

Test:U:23.998V I:0.1762A P:4.2284W PF:1.0000 Freq:49.99Hz
Lamp Flux:373.139x1 lm

NAME: 2417.200A

TYPE:

WEIGHT:

SPEC.: 3000K

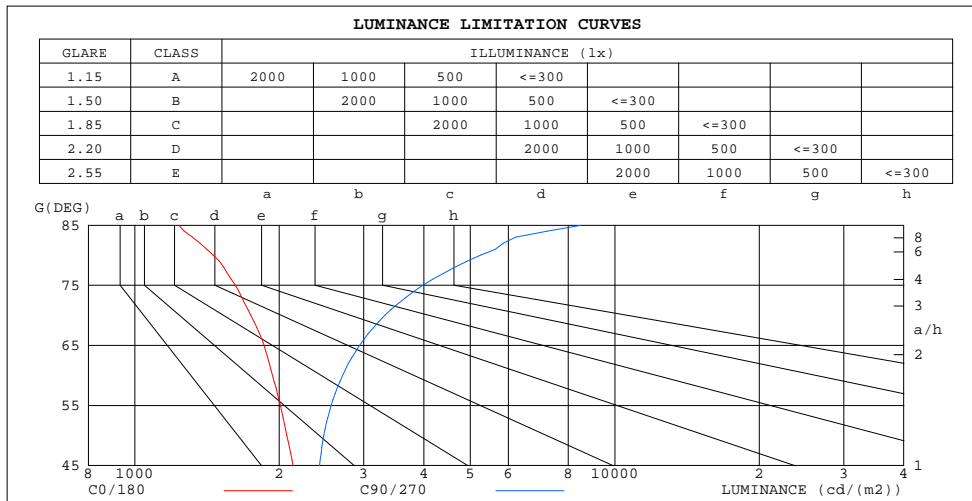
DIM.:

SERIAL No.: 2403270233

MFR.: RISE

SUR.: 0.01746m2

Shielding Angle:



LUMINANCE cd/(m2)		
G(180)	C0/180	C90/270
85	1235	8491
80	1457	5254
75	1620	3985
70	1744	3319
65	1859	2940
60	1937	2709
55	2010	2563
50	2075	2476
45	2135	2427

C Range: 0 - 360DEG
C Interval: 30.0DEG
Test Speed: HIGH
Temperature:25.3℃
Operators:zoe
Test Date:2024-3-27

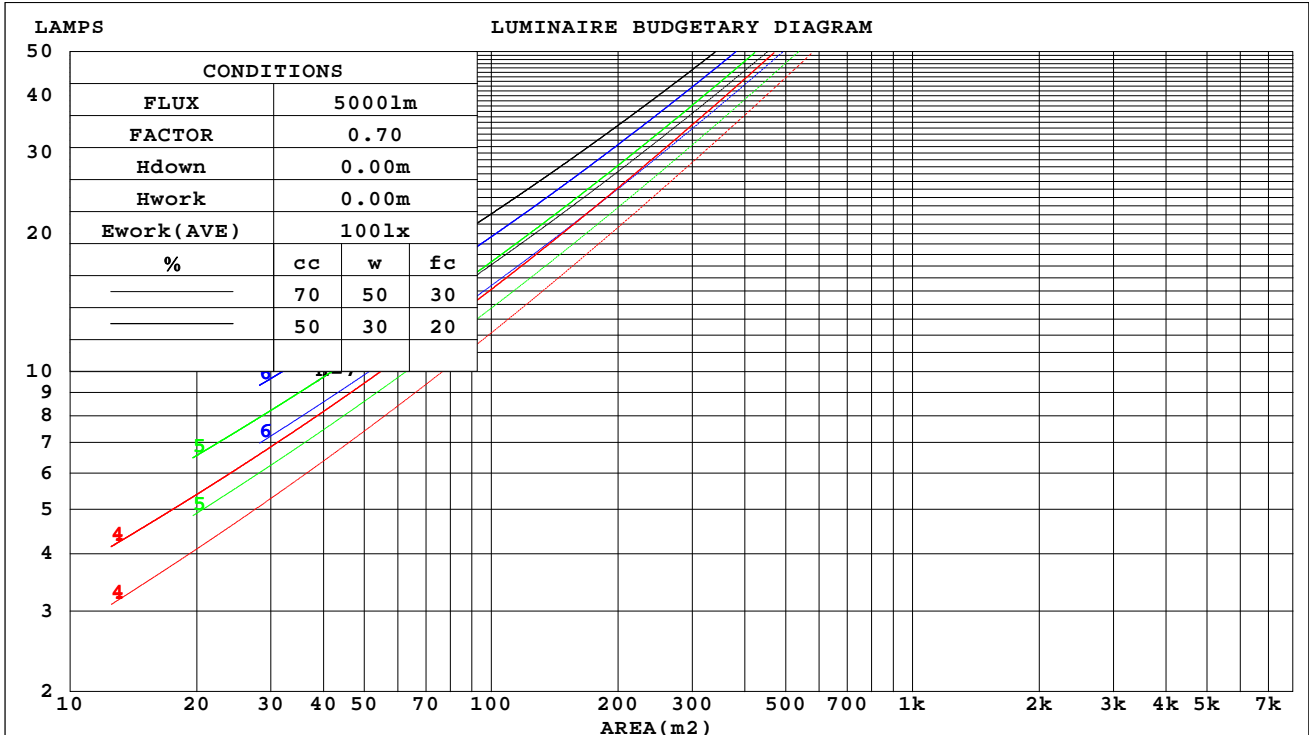
Range: 0 - 180DEG
Interval: 1.0DEG
Test System:EVERFINE GO-SPEX500_V1 SYSTEM V2.00.461
Humidity:65.0%
Test Distance:3.160m [K=1.0000]
Remarks: LAMP:HL-A-3014H421W-S1-08HL-HR5 Ra:90
PC:PT-0064
NOT DRIVER:24V
30minutes warm-up

CU AND LUMINAIRE BUDGETARY ESTIMATE DIAGRAM

Test:U:23.998V I:0.1762A P:4.2284W PF:1.0000 Freq:49.99Hz
Lamp Flux:373.139x1 lm

NAME: 2417.200A	TYPE:	WEIGHT:
SPEC.: 3000K	DIM.:	SERIAL No.: 2403270233
MFR.: RISE	SUR.: 0.01746m2	Shielding Angle:

cc	80%			70%			50%			30%			10%			0
w	50%	30%	10%	50%	30%	10%	50%	30%	10%	50%	30%	10%	50%	30%	10%	0
fc	20%			20%			20%			20%			20%			0
RCR	RCR:Room Cavity Ratio															



C Range: 0 - 360DEG
C Interval: 30.0DEG
Test Speed: HIGH
Temperature:25.3℃
Operators:zoe
Test Date:2024-3-27

Range: 0 - 180DEG
Interval: 1.0DEG
Test System:EVERFINE GO-SPEX500_V1 SYSTEM V2.00.461
Humidity:65.0%
Test Distance:3.160m [K=1.0000]
Remarks: LAMP:HL-A-3014H421W-S1-08HL-HR5 Ra:90
PC:PT-0064
NOT DRIVER:24V
30minutes warm-up



WEC AND CCEC

Test:U:23.998V I:0.1762A P:4.2284W PF:1.0000 Freq:49.99Hz Lamp Flux:373.139x1 lm		
NAME: 2417.200A	TYPE:	WEIGHT:
SPEC.: 3000K	DIM.:	SERIAL No.: 2403270233
MFR.: RISE	SUR.: 0.01746m2	Shielding Angle:

cc	80%			70%			50%			30%			10%			0	
w	50%	30%	10%	50%	30%	10%	50%	30%	10%	50%	30%	10%	50%	30%	10%	0	
fc	20%			20%			20%			20%			20%			0	
RCR	RCR:Room Cavity Ratio						Wall Exitance Coefficients(WEC)										
0.0																	
1.0	.137	.078	.025	.134	.077	.024	.129	.074	.024	.125	.072	.023	.121	.070	.023		
2.0	.120	.066	.020	.118	.065	.020	.113	.063	.020	.109	.061	.019	.106	.060	.019		
3.0	.107	.057	.017	.105	.056	.017	.102	.055	.017	.098	.054	.016	.095	.052	.016		
4.0	.097	.050	.015	.095	.050	.015	.092	.049	.015	.089	.048	.014	.086	.047	.014		
5.0	.088	.045	.013	.087	.045	.013	.084	.044	.013	.081	.043	.013	.078	.042	.013		
6.0	.081	.041	.012	.080	.040	.012	.077	.039	.011	.075	.039	.011	.072	.038	.011		
7.0	.075	.037	.011	.074	.037	.010	.071	.036	.010	.069	.035	.010	.067	.035	.010		
8.0	.070	.034	.010	.068	.034	.010	.066	.033	.009	.064	.033	.009	.062	.032	.009		
9.0	.065	.031	.009	.064	.031	.009	.062	.031	.009	.060	.030	.009	.058	.030	.009		
10.0	.061	.029	.008	.060	.029	.008	.058	.028	.008	.057	.028	.008	.055	.028	.008		

cc	80%			70%			50%			30%			10%			0
w	50%	30%	10%	50%	30%	10%	50%	30%	10%	50%	30%	10%	50%	30%	10%	0
fc	20%			20%			20%			20%			20%			0
RCR	RCR:Room Cavity Ratio			Ceiling Cavity Exitance Coefficients(CCEC)												
0.0	.069	.069	.069	.059	.059	.059	.040	.040	.040	.023	.023	.023	.007	.007	.007	
1.0	.067	.056	.046	.057	.048	.040	.039	.033	.028	.022	.019	.016	.007	.006	.005	
2.0	.064	.047	.034	.055	.041	.029	.038	.028	.020	.022	.016	.012	.007	.005	.004	
3.0	.061	.041	.025	.053	.036	.022	.036	.025	.015	.021	.014	.009	.007	.005	.003	
4.0	.058	.037	.020	.050	.032	.017	.034	.022	.012	.020	.013	.007	.006	.004	.002	
5.0	.055	.033	.016	.048	.028	.014	.033	.020	.010	.019	.012	.006	.006	.004	.002	
6.0	.053	.030	.014	.045	.026	.012	.031	.018	.008	.018	.011	.005	.006	.003	.002	
7.0	.050	.027	.012	.043	.024	.010	.030	.017	.007	.017	.010	.004	.006	.003	.001	
8.0	.048	.025	.010	.041	.022	.009	.028	.015	.006	.016	.009	.004	.005	.003	.001	
9.0	.045	.024	.009	.039	.020	.008	.027	.014	.005	.016	.008	.003	.005	.003	.001	
10.0	.043	.022	.008	.037	.019	.007	.026	.013	.005	.015	.008	.003	.005	.003	.001	

C Range: 0 - 360DEG
C Interval: 30.0DEG
Test Speed: HIGH
Temperature:25.3℃
Operators:zoe
Test Date:2024-3-27

Range: 0 - 180DEG
Interval: 1.0DEG
Test System:EVERFINE GO-SPEX500_V1 SYSTEM V2.00.461
Humidity:65.0%
Test Distance:3.160m [K=1.0000]
Remarks: LAMP:HL-A-3014H421W-S1-08HL-HR5 Ra:90
PC:PT-0064
NOT DRIVER:24V
30minutes warm-up

UGR(Unified Glare Rating) Table

Test:U:23.998V I:0.1762A P:4.2284W PF:1.0000 Freq:49.99Hz Lamp Flux:373.139x1 lm										
NAME: 2417.200A					TYPE:			WEIGHT:		
SPEC.: 3000K					DIM.:			SERIAL No.: 2403270233		
MFR.: RISE					SUR.: 0.01746m2			Shielding Angle:		
ceiling/cavity	0.7	0.7	0.5	0.5	0.3	0.7	0.7	0.5	0.5	0.3
walls	0.5	0.3	0.5	0.3	0.3	0.5	0.3	0.5	0.3	0.3
working plane	0.2	0.2	0.2	0.2	0.2	0.2	0.2	0.2	0.2	0.2
Room dimensions	Viewed crosswise					Viewed endwise				
x = 2H y = 2H	18.5	20.1	18.8	20.3	20.5	19.7	21.4	20.0	21.6	21.8
3H	20.1	21.6	20.4	21.8	22.1	22.2	23.7	22.5	23.9	24.2
4H	20.7	22.1	21.0	22.4	22.7	23.5	25.0	23.9	25.2	25.5
6H	21.2	22.6	21.5	22.8	23.1	25.0	26.4	25.4	26.7	27.0
8H	21.4	22.7	21.7	23.0	23.3	25.8	27.1	26.1	27.4	27.7
12H	21.5	22.7	21.8	23.0	23.4	26.6	27.9	26.9	28.2	28.5
4H 2H	19.4	20.9	19.8	21.1	21.4	20.4	21.8	20.7	22.1	22.3
3H	21.3	22.6	21.6	22.9	23.2	23.1	24.4	23.4	24.7	25.0
4H	22.1	23.3	22.5	23.6	24.0	24.6	25.8	25.0	26.1	26.5
6H	22.8	23.9	23.2	24.2	24.6	26.3	27.4	26.7	27.8	28.1
8H	23.1	24.1	23.5	24.5	24.9	27.2	28.2	27.6	28.5	28.9
12H	23.3	24.2	23.7	24.6	25.0	28.1	29.1	28.6	29.5	29.9
8H 4H	23.0	24.0	23.4	24.3	24.7	25.0	26.0	25.4	26.4	26.8
6H	24.0	24.9	24.5	25.3	25.7	27.0	27.9	27.5	28.3	28.7
8H	24.5	25.2	24.9	25.7	26.1	28.1	28.8	28.5	29.3	29.7
12H	24.9	25.5	25.3	26.0	26.5	29.3	30.0	29.8	30.4	30.9
12H 4H	23.2	24.2	23.7	24.6	25.0	25.1	26.0	25.5	26.4	26.8
6H	24.5	25.2	24.9	25.7	26.1	27.2	27.9	27.6	28.4	28.8
8H	25.1	25.7	25.6	26.2	26.7	28.3	29.0	28.8	29.4	29.9
Variations with the observer position at spacings(CIE Pub.117):										
S = 1.0H	+ 0.1 / - 0.2					+ 0.1 / - 0.1				
1.5H	+ 0.2 / - 0.3					+ 0.2 / - 0.2				
2.0H	+ 0.2 / - 0.4					+ 0.2 / - 0.3				

CIE Pub.117, 373.1 lm Total Lamp Luminous Flux Correct (8log(F/F0) = -3.4)
Area: 0.01746 m2

C Range: 0 - 360DEG
C Interval: 30.0DEG
Test Speed: HIGH
Temperature:25.3℃
Operators:zoe
Test Date:2024-3-27

Range: 0 - 180DEG
Interval: 1.0DEG
Test System:EVERFINE GO-SPEX500_V1 SYSTEM V2.00.461
Humidity:65.0%
Test Distance:3.160m [K=1.0000]
Remarks: LAMP:HL-A-3014H421W-S1-08HL-HR5 Ra:90
PC:PT-0064
NOT DRIVER:24V
30minutes warm-up

UTILIZATION FACTORS TABLE

Test:U:23.998V I:0.1762A P:4.2284W PF:1.0000 Freq:49.99Hz Lamp Flux:373.139x1 lm		
NAME: 2417.200A	TYPE:	WEIGHT:
SPEC.: 3000K	DIM.:	SERIAL No.: 2403270233
MFR.: RISE	SUR.: 0.01746m2	Shielding Angle:

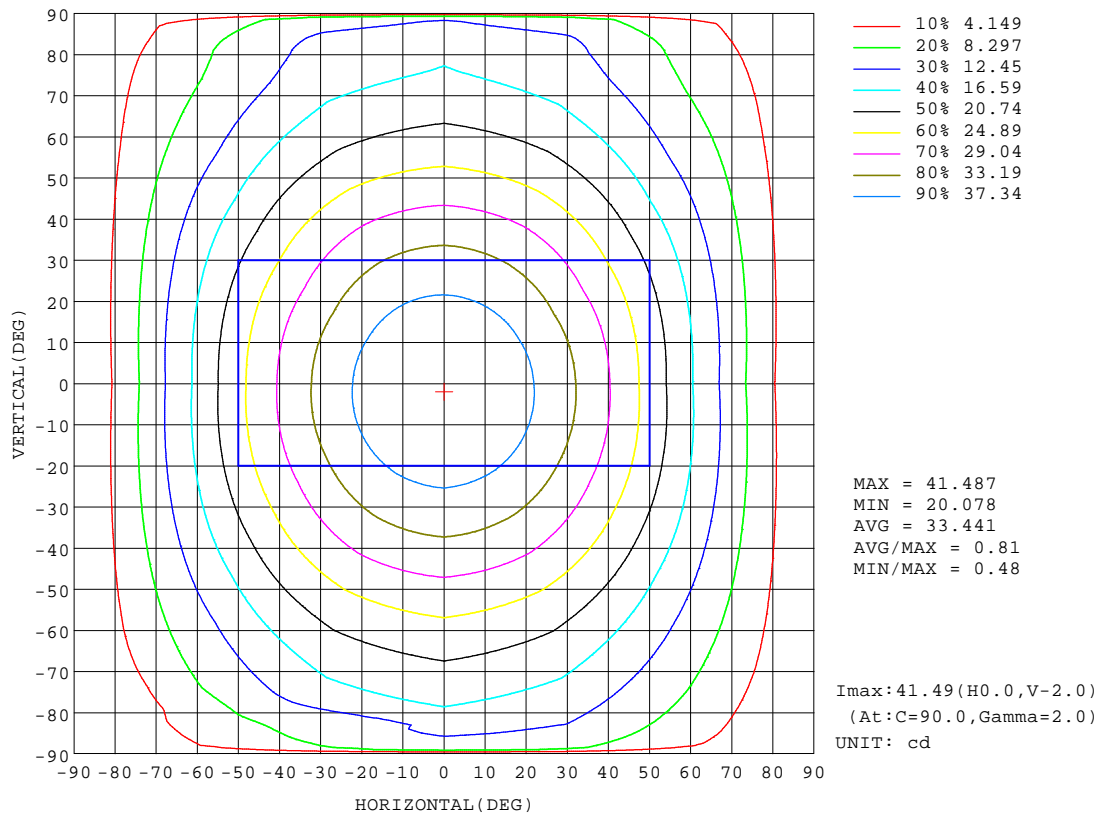
REFLECTANCE										
Ceiling	0.8	0.8	0.8	0.7	0.7	0.7	0.5	0.5	0.5	0
Walls	0.7	0.5	0.3	0.7	0.5	0.3	0.7	0.5	0.3	0
Working plane	0.2	0.2	0.2	0.2	0.2	0.2	0.2	0.2	0.2	0
ROOM INDEX	UTILIZATION FACTORS(PERCENT) $k(RI) \times RCR = 5$									
k = 0.60	20	15	13	19	15	13	19	15	13	10
0.80	23	19	16	23	18	16	22	18	16	13
1.00	26	22	19	26	21	19	25	22	18	16
1.25	28	24	21	28	24	21	27	24	21	18
1.50	30	26	23	30	26	23	29	25	23	20
2.00	33	29	27	32	29	26	31	28	26	23
2.50	34	31	29	34	31	28	32	30	28	24
3.00	36	33	30	35	32	30	33	31	29	26
4.00	37	35	33	36	34	32	35	33	31	28
5.00	38	36	34	37	35	34	36	34	33	29
ROOM INDEX	UF(total)									Direct
According to DIN EN 13032-2 2004			Suspended					SHRNOM = 1.25		

C Range: 0 - 360DEG
C Interval: 30.0DEG
Test Speed: HIGH
Temperature:25.3℃
Operators:zoe
Test Date:2024-3-27

Range: 0 - 180DEG
Interval: 1.0DEG
Test System:EVERFINE GO-SPEX500_V1 SYSTEM V2.00.461
Humidity:65.0%
Test Distance:3.160m [K=1.0000]
Remarks: LAMP:HL-A-3014H421W-S1-08HL-HR5 Ra:90
PC:PT-0064
NOT DRIVER:24V
30minutes warm-up

ISOCANDELA DIAGRAM

Test:U:23.998V I:0.1762A P:4.2284W PF:1.0000 Freq:49.99Hz Lamp Flux:373.139x1 lm		
NAME: 2417.200A	TYPE:	WEIGHT:
SPEC.: 3000K	DIM.:	SERIAL No.: 2403270233
MFR.: RISE	SUR.: 0.01746m2	Shielding Angle:

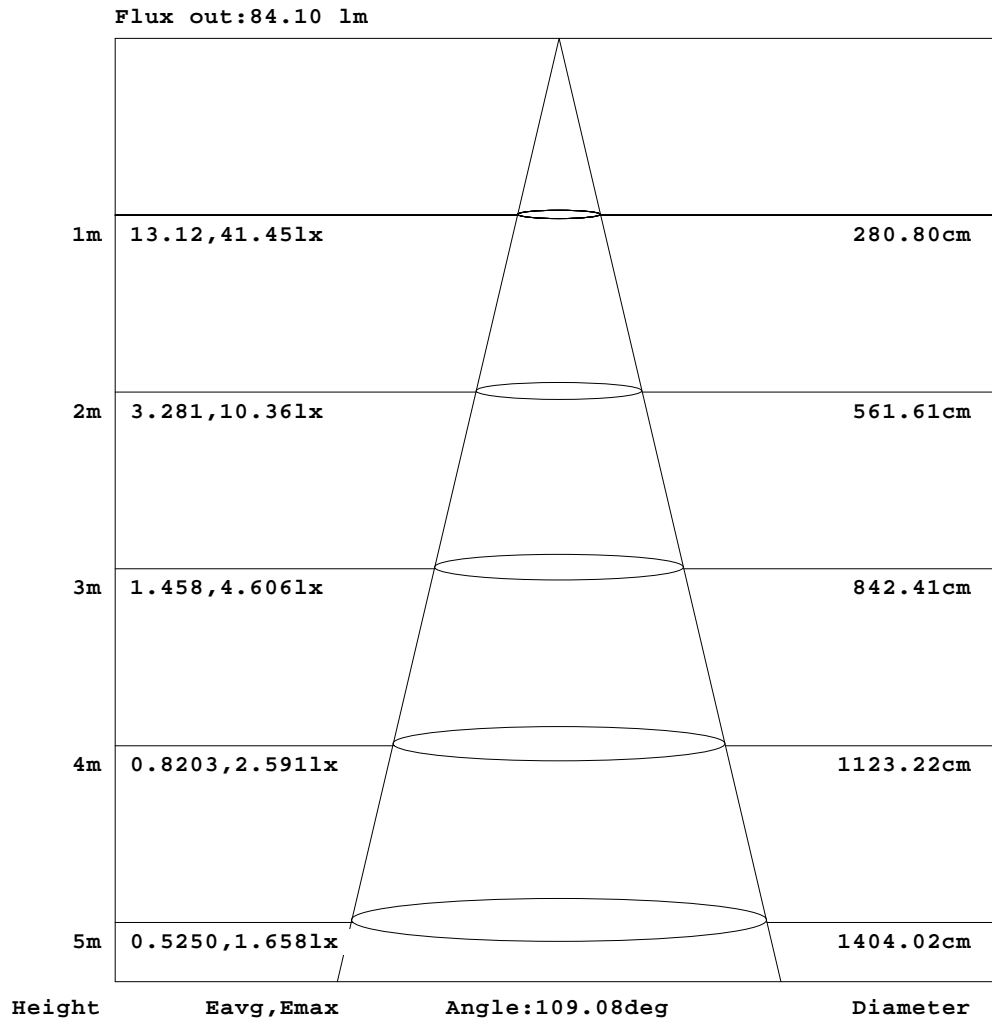


C Range: 0 - 360DEG
C Interval: 30.0DEG
Test Speed: HIGH
Temperature: 25.3 °C
Operators: zoe
Test Date: 2024-3-27

Range: 0 - 180DEG
Interval: 1.0DEG
Test System: EVERFINE GO-SPEX500_V1 SYSTEM V2.00.461
Humidity: 65.0%
Test Distance: 3.160m [K=1.0000]
Remarks: LAMP: HL-A-3014H421W-S1-08HL-HR5 Ra: 90
PC: PT-0064
NOT DRIVER: 24V
30minutes warm-up

AAI Figure

Test:U:23.998V I:0.1762A P:4.2284W PF:1.0000 Freq:49.99Hz Lamp Flux:373.139x1 lm		
NAME: 2417.200A	TYPE:	WEIGHT:
SPEC.: 3000K	DIM.:	SERIAL No.: 2403270233
MFR.: RISE	SUR.: 0.01746m2	Shielding Angle:



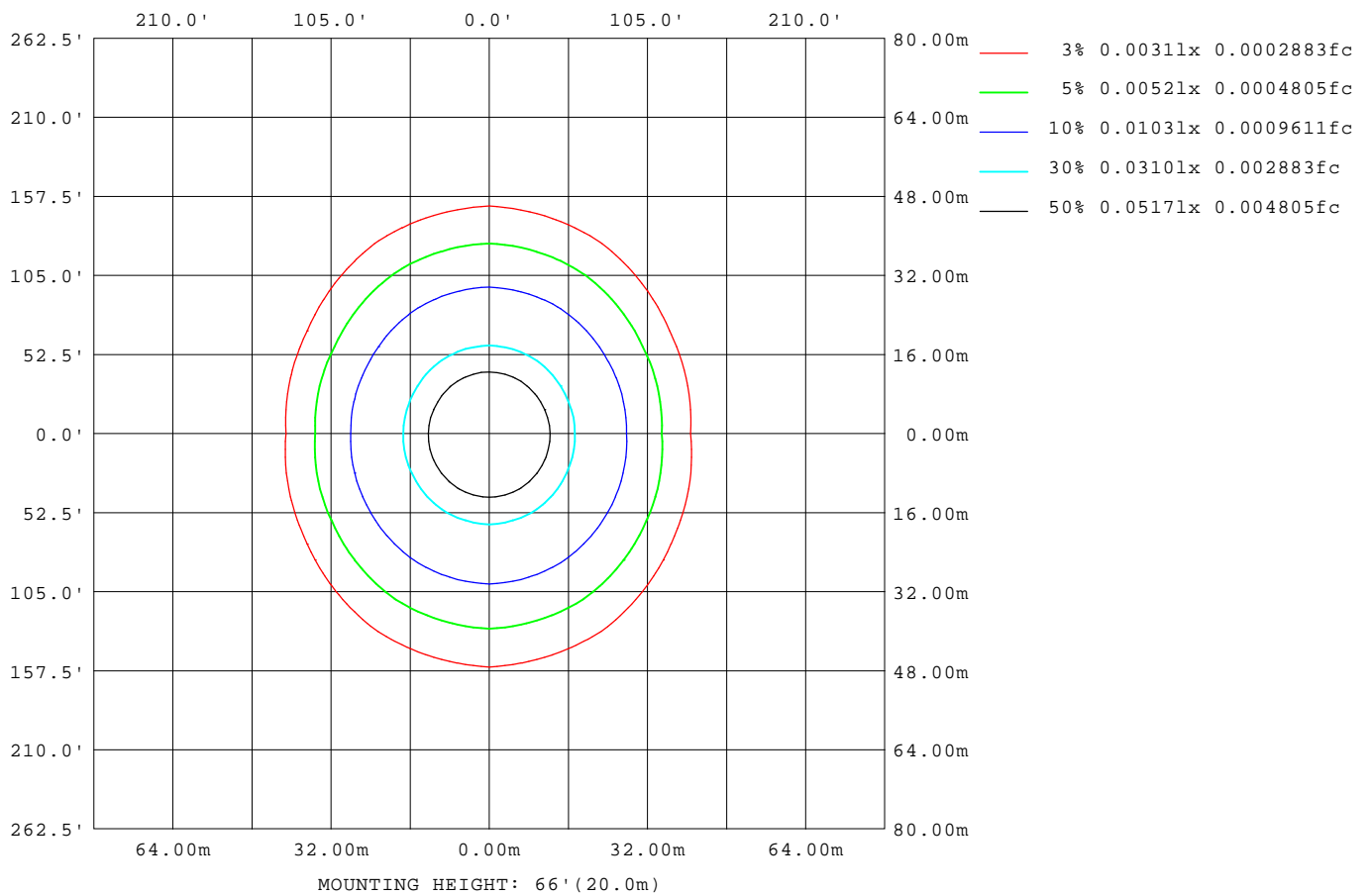
Note:The Curves indicate the illuminated area and the average illumination when the luminaire is at different distance.

C Range: 0 - 360DEG
C Interval: 30.0DEG
Test Speed: HIGH
Temperature:25.3℃
Operators:zoe
Test Date:2024-3-27

Range: 0 - 180DEG
Interval: 1.0DEG
Test System:EVERFINE GO-SPEX500_V1 SYSTEM V2.00.461
Humidity:65.0%
Test Distance:3.160m [K=1.0000]
Remarks: LAMP:HL-A-3014H421W-S1-08HL-HR5 Ra:90
PC:PT-0064
NOT DRIVER:24V
30minutes warm-up

ISOLUX DIAGRAM

Test:U:23.998V I:0.1762A P:4.2284W PF:1.0000 Freq:49.99Hz Lamp Flux:373.139x1 lm		
NAME: 2417.200A	TYPE:	WEIGHT:
SPEC.: 3000K	DIM.:	SERIAL No.: 2403270233
MFR.: RISE	SUR.: 0.01746m2	Shielding Angle:



C Range: 0 - 360DEG
C Interval: 30.0DEG
Test Speed: HIGH
Temperature:25.3℃
Operators:zoe
Test Date:2024-3-27

Range: 0 - 180DEG
Interval: 1.0DEG
Test System:EVERFINE GO-SPEX500_V1 SYSTEM V2.00.461
Humidity:65.0%
Test Distance:3.160m [K=1.0000]
Remarks: LAMP:HL-A-3014H421W-S1-08HL-HR5 Ra:90
PC:PT-0064
NOT DRIVER:24V
30minutes warm-up

LED Avg.L Report

Test:U:23.998V I:0.1762A P:4.2284W PF:1.0000 Freq:49.99Hz Lamp Flux:373.139x1 lm		
NAME: 2417.200A	TYPE:	WEIGHT:
SPEC.: 3000K	DIM.:	SERIAL No.: 2403270233
MFR.: RISE	SUR.: 0.01746m2	Shielding Angle:

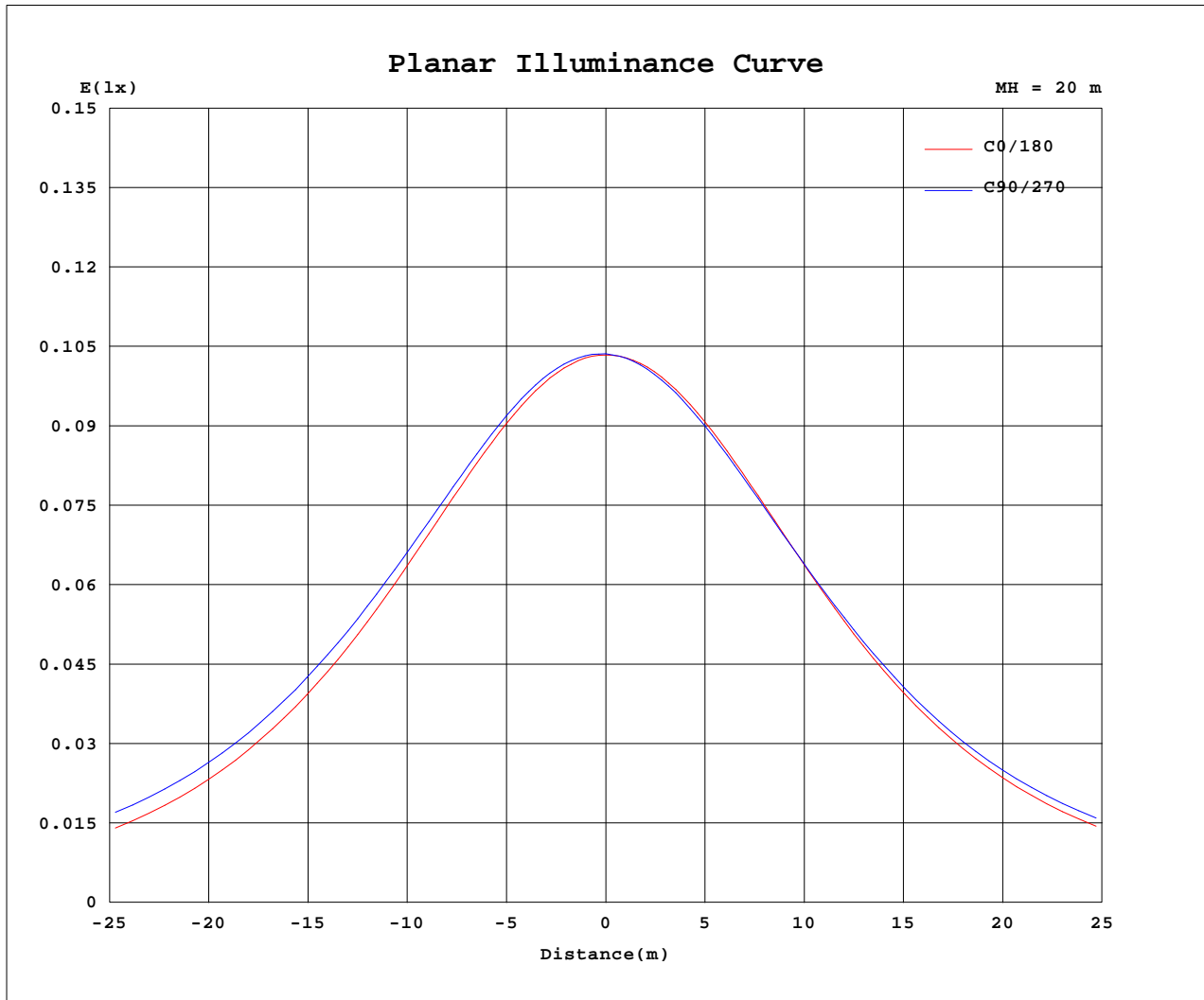
AvgL	cd/m2
L_0~180(65)av	1893
L_0~180(75)av	1669
L_0~180(85)av	1288
L_90~270(65)av	2830
L_90~270(75)av	3874
L_90~270(85)av	8996
L_45(65)av	2408
L_45(75)av	2982
L_45(85)av	6347

Standard: GB/T 29293-2012

C Range: 0 - 360DEG
C Interval: 30.0DEG
Test Speed: HIGH
Temperature:25.3℃
Operators:zoe
Test Date:2024-3-27

Range: 0 - 180DEG
Interval: 1.0DEG
Test System:EVERFINE GO-SPEX500_V1 SYSTEM V2.00.461
Humidity:65.0%
Test Distance:3.160m [K=1.0000]
Remarks: LAMP:HL-A-3014H421W-S1-08HL-HR5 Ra:90
PC:PT-0064
NOT DRIVER:24V
30minutes warm-up

Planar Illuminance Curve



C Range: 0 - 360DEG
 C Interval: 30.0DEG
 Test Speed: HIGH
 Temperature: 25.3 °C
 Operators: zoe
 Test Date: 2024-3-27

Range: 0 - 180DEG
 Interval: 1.0DEG
 Test System: EVERFINE GO-SPEX500_V1 SYSTEM V2.00.461
 Humidity: 65.0%
 Test Distance: 3.160m [K=1.0000]
 Remarks: LAMP: HL-A-3014H421W-S1-08HL-HR5 Ra:90
 PC: PT-0064
 NOT DRIVER: 24V
 30minutes warm-up



LUMINOUS DISTRIBUTION INTENSITY DATA

Test:U:23.998V I:0.1762A P:4.2284W PF:1.0000 Freq:49.99Hz Lamp Flux:373.139x1 lm		
NAME: 2417.200A	TYPE:	WEIGHT:
SPEC.: 3000K	DIM.:	SERIAL No.: 2403270233
MFR.: RISE	SUR.: 0.01746m2	Shielding Angle:

Table--1

UNIT: cd

C(DEG) (DEG)	0	30	60	90	120	150	180	210	240	270	300	330						
0	41.4	41.4	41.4	41.4	41.4	41.4	41.4	41.4	41.4	41.4	41.4	41.4						
5	41.2	41.3	41.3	41.4	41.4	41.3	41.2	41.1	41.1	41.1	41.1	41.1						
10	40.5	40.7	40.8	40.9	40.9	40.8	40.6	40.4	40.3	40.3	40.3	40.4						
15	39.5	39.7	39.9	40.0	40.0	39.8	39.6	39.3	39.2	39.2	39.2	39.2						
20	38.0	38.4	38.7	38.9	38.7	38.5	38.1	37.8	37.8	37.8	37.7	37.7						
25	36.2	36.7	37.1	37.4	37.2	36.7	36.3	36.0	36.1	36.2	36.0	35.9						
30	34.1	34.6	35.4	35.9	35.5	34.7	34.3	33.9	34.3	34.5	34.2	33.8						
35	31.8	32.4	33.5	34.1	33.5	32.5	31.9	31.6	32.3	32.6	32.2	31.5						
40	29.3	30.0	31.4	32.1	31.5	30.0	29.4	29.2	30.2	30.5	30.0	29.0						
45	26.4	27.5	29.2	29.9	29.2	27.5	26.7	26.7	27.8	28.3	27.7	26.5						
50	23.3	24.8	26.8	27.8	26.9	24.9	23.8	24.0	25.5	26.1	25.3	23.8						
55	20.1	22.1	24.5	25.6	24.5	22.2	20.7	21.3	23.2	23.9	22.9	21.0						
60	16.9	19.3	22.3	23.6	22.3	19.4	17.4	18.4	20.9	22.0	20.7	18.1						
65	13.7	16.5	20.2	21.7	20.1	16.5	14.2	15.7	18.9	20.1	18.7	15.4						
70	10.4	13.8	18.1	19.8	18.1	13.8	11.0	13.1	17.0	18.4	16.8	12.8						
75	7.33	11.5	16.2	18.0	16.1	11.3	7.76	10.8	15.4	17.0	15.2	10.5						
80	4.42	9.22	14.1	15.9	13.6	9.04	4.65	8.90	14.3	16.1	14.0	8.46						
85	1.88	6.94	11.9	12.9	10.4	5.81	2.04	7.64	13.1	14.5	12.8	7.03						
90	0.00	0.00	0.00	0.00	0.00	0.00	0.00	0.00	0.00	0.00	0.00	0.00						
95	0.00	0.00	0.00	0.00	0.00	0.00	0.00	0.00	0.00	0.00	0.00	0.00						
100	0.00	0.00	0.00	0.00	0.00	0.00	0.00	0.00	0.00	0.00	0.00	0.00						
105	0.00	0.00	0.00	0.00	0.00	0.00	0.00	0.00	0.00	0.00	0.00	0.00						
110	0.00	0.00	0.00	0.00	0.00	0.00	0.00	0.00	0.00	0.00	0.00	0.00						
115	0.00	0.00	0.00	0.00	0.00	0.00	0.00	0.00	0.00	0.00	0.00	0.00						
120	0.00	0.00	0.00	0.00	0.00	0.00	0.00	0.00	0.00	0.00	0.00	0.00						
125	0.00	0.00	0.00	0.00	0.00	0.00	0.00	0.00	0.00	0.00	0.00	0.00						
130	0.00	0.00	0.00	0.00	0.00	0.00	0.00	0.00	0.00	0.00	0.00	0.00						
135	0.00	0.00	0.00	0.00	0.00	0.00	0.00	0.00	0.00	0.00	0.00	0.00						
140	0.00	0.00	0.00	0.00	0.00	0.00	0.00	0.00	0.00	0.00	0.00	0.00						
145	0.00	0.00	0.00	0.00	0.00	0.00	0.00	0.00	0.00	0.00	0.00	0.00						
150	0.00	0.00	0.00	0.00	0.00	0.00	0.00	0.00	0.00	0.00	0.00	0.00						
155	0.00	0.00	0.00	0.00	0.00	0.00	0.00	0.00	0.00	0.00	0.00	0.00						
160	0.00	0.00	0.00	0.00	0.00	0.00	0.00	0.00	0.00	0.00	0.00	0.00						
165	0.00	0.00	0.00	0.00	0.00	0.00	0.00	0.00	0.00	0.00	0.00	0.00						
170	0.00	0.00	0.00	0.00	0.00	0.00	0.00	0.00	0.00	0.00	0.00	0.00						
175	0.00	0.00	0.00	0.00	0.00	0.00	0.00	0.00	0.00	0.00	0.00	0.00						
180	0.00	0.00	0.00	0.00	0.00	0.00	0.00	0.00	0.00	0.00	0.00	0.00						

C Range: 0 - 360DEG
C Interval: 30.0DEG
Test Speed: HIGH
Temperature:25.3℃
Operators:zoe
Test Date:2024-3-27

Range: 0 - 180DEG
Interval: 1.0DEG
Test System:EVERFINE GO-SPEX500_V1 SYSTEM V2.00.461
Humidity:65.0%
Test Distance:3.160m [K=1.0000]
Remarks: LAMP:HL-A-3014H421W-S1-08HL-HR5 Ra:90
PC:PT-0064
NOT DRIVER:24V
30minutes warm-up